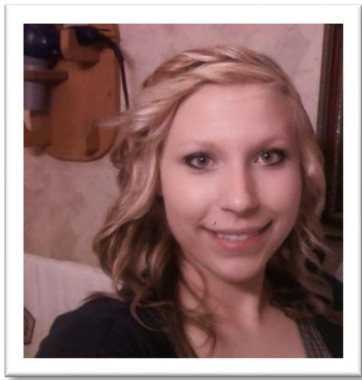


## Courtney's Story

On May 7<sup>th</sup>, 2012, Courtney Price and her young daughter were in the process of leaving a domestic violence situation. Her husband unexpectedly came home early. Upon discovering them waiting to be picked up by family members, he shot her 10 times killing her. He was subsequently sentenced to 24 years in prison.



*Courtney Shannon Price  
1990-2012*

Safe Haven Cheatham County, Inc. is dedicated in memory of Courtney Price and other victims of abuse. Safe Haven provides safe and welcoming refuge to women and men, with or without children, who are in need of temporary shelter to escape domestic violence.

## Warning Signs

Early Warning Signs

### Intrusion

Extremely controlling behavior, constantly asking where you are going and who you are with, control of what you wear and how you act.

### Unpredictability

Erratic, unstable and impulsive behavior. Bad temper and humiliation in front of others.

### Possessiveness

Extreme jealousy, verbal abuse, constant blame and accusations.



Facebook

Safe Haven Cheatham County, Inc.

## Contact/Donate

Safe Haven Cheatham County, Inc.  
P.O. Box 246, Ashland City, TN 37015

615-681-5863

or

[www.safehavencheathamcounty.org](http://www.safehavencheathamcounty.org)

“This Project was supported by Award No. 2017-VA-GX-0051 and Award No. 2018-V2-GX-0024 and Award No. 2019-V2-GX-0043 awarded by the office for Victims of Crime, Office of Justice Programs, U.S Department of Justice through the Tennessee Office of Criminal Justice Programs.”

Safe Haven  
Cheatham County

Choose to be a  
**survivor,**  
not a  
victim.

A safe place in  
the storms of  
life.



Crisis Line 24/7  
615-681-5863

# Safe Haven Cheatham County



40%

*40% of TN women & 32.5% of TN men experienced intimate physical violence, rape, and/or stalking in their lifetime.*



32.5%

## How we can help...

Safe Environment

Shelter/Housing

Food

Clothing

Legal Aid

Counseling

Employment Assistance

Group Support

24/7 Crisis Hotline

Children's Services

Community Education

*Every 9 seconds in the United States a woman is assaulted or beaten.*



*Nationally on a typical day, domestic violence hotlines receive approximately 21,000 calls.*

Safe Haven Cheatham County Inc.

## MISSION

Safe Haven Cheatham County is committed to meeting the immediate needs of domestic violence victims and their children. We are dedicated in "Our Mission" to provide a safe environment for the victims while in our care and encourage them to build better productive lives while offering the support, education and services they need to accomplish this goal.

We do not discriminate against race, color, religion, sex, origin, age, physical or mental disability or any other protected class under federal, state, or local law.

## Contact/Donate

Safe Haven Cheatham County, Inc.  
P.O. Box 246, Ashland City, TN 37015.

**615-681-5863**

or

[www.safehavencheathamcounty.org](http://www.safehavencheathamcounty.org)